

## Heavy Duty Tric Trac Spacer

### Description

A versatile continuous plastic spacer (Tric Trac) designed for use on horizontal and vertical surfaces. The spacer supports mesh or reinforcement in suspended slabs. Suitable for use on metal decking. The cut-outs ensure proper flow of the concrete without compromising stability and at the same time reduce the visibility of the spacer on the finished concrete surface.



### Sizing & Packing

| Product Code | Concrete Cover (mm) | Length (mt) | Pack (mt) | Pallet (mt) |
|--------------|---------------------|-------------|-----------|-------------|
| CPS/TT/15/2  | 15                  | 2           | 100       | 6600        |
| CPS/TT/20/2  | 20                  | 2           | 100       | 6300        |
| CPS/TT/25/2  | 25                  | 2           | 100       | 4900        |
| CPS/TT/30/2  | 30                  | 2           | 100       | 4200        |
| CPS/TT/35/2  | 35                  | 2           | 60        | 3600        |
| CPS/TT/40/2  | 40                  | 2           | 60        | 2400        |
| CPS/TT/45/2  | 45                  | 2           | 60        | 1440        |
| CPS/TT/50/2  | 50                  | 2           | 60        | 1680        |
| CPS/TT/60/2  | 60                  | 2           | 40        | 1200        |
| CPS/TT/70/2  | 70                  | 2           | 40        | 1120        |
| CPS/TT/75/2  | 75                  | 2           | 40        | 1120        |
| CPS/TT/80/2  | 80                  | 2           | 40        | 1120        |

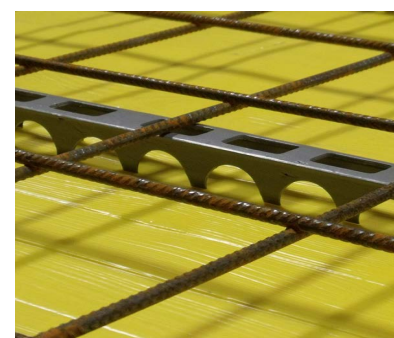
### Specification

| Requirement | Description                                 | Result |
|-------------|---|--------|
| 6.2         | Min 25% Voids                               | Pass   |
| 7.3         | + - 2mm Tolerance                           | Pass   |
| 7.72        | Breadth / Height Ratio                      | Pass   |
| 9           | Max deflection of 1mm Under 0.5kn test load | Pass   |
| 11          | Marking of packs                            | Pass   |

≤ 35mm = Round Recess  
≥ 40mm = Square recess

In accordance with the requirements of 'Spacers and chairs for steel reinforcement and their specification' the above products have been supplied and comply with the requirements of British Standard BS7973-1:2001

Note: In the absence of a specific harmonised European standard (hEN) or European Technical Approval (ETA), a CE Mark is not required.



### Material

- Polyvinyl chloride (PVC)
- Free from CFC and HFC
- Compliant to Reach Regulations

### Packaging

- Free of halogen-containing compounds, azo dyes, flame retardants

Unit 51, Portmanmoor Road Ind Est,  
Ocean Park, Cardiff, CF24 5HB