

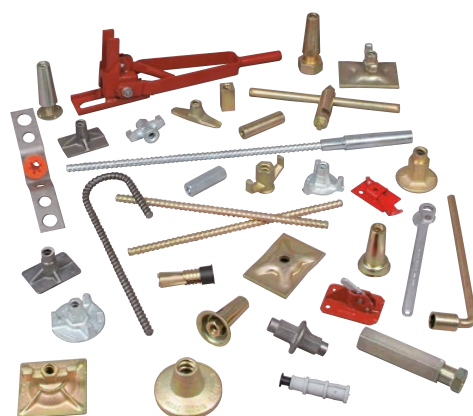
Dywidag - Hex Coupler

DYWIDAG - Form Tie System

is based on the original DYWIDAG Threadbar with hot-rolled, continuous thread on both sides. Together with matching accessories, it is used by formwork manufacturers around the world and has proven itself countless times on major projects

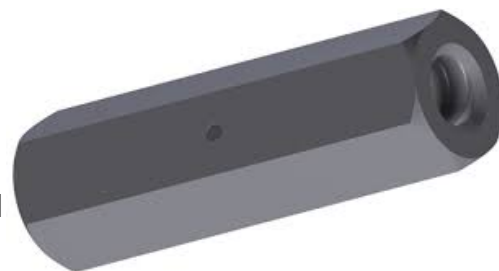
A decisive advantage of the DYWIDAG Threadbar is its coarse thread that does not run around the complete circumference of the bar. Consequently, the bar is not only insensitive against damages and dirt, but also self-cleaning. Furthermore, it can be cut at any point and used continuously with couplers or nuts.

We offer a large range of accessories in diameters 12.5mm, 15mm, 20mm & 26.5mm.



Hex Coupler

There are different couplers for the force-fit connection of two threadbars. A stop pin in the middle of the coupler ensures an equal screwing-in length of both bars. Two fixed threadbars can be connected and tensioned using a turnbuckle splice.



Article No.	Bar Ø [mm]	Length [mm]	Hex [mm]	Weight [kg/pc.]
15 F 2002/90 ¹⁾	15	90	30	0.40
15 F 3005	15	105	30	0.45
20 F 3005	20	130	36	0.74
26 E 3005/120 ²⁾	26.5	120	46	1.10
26 E 3005/150	26.5	150	46	1.38

- 1) Working load of 15 F 2002/90: 80kN
- 2) Working load of 26 E 3005/120: 200kN

Screwing-in length is guaranteed by stop pin
All Couplers are also available galvanized > Article No. .../V
(example: 15 F 3005/V)

