

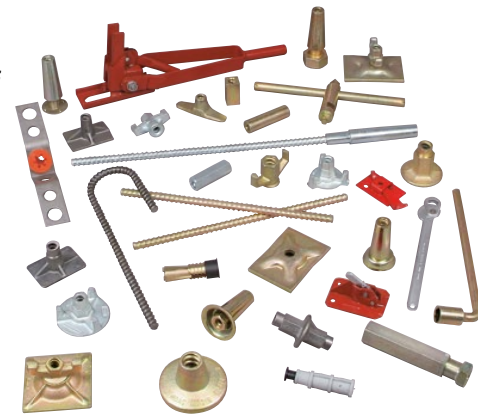
Dywidag - Hex Nut

DYWIDAG - Form Tie System

is based on the original DYWIDAG Threadbar with hot-rolled, continuous thread on both sides. Together with matching accessories, it is used by formwork manufacturers around the world and has proven itself countless times on major projects

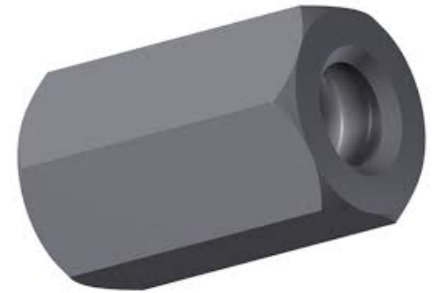
A decisive advantage of the DYWIDAG Threadbar is its coarse thread that does not run around the complete circumference of the bar. Consequently, the bar is not only insensitive against damages and dirt, but also self-cleaning. Furthermore, it can be cut at any point and used continuously with couplers or nuts.

We offer a large range of accessories in diameters 12.5mm, 15mm, 20mm & 26.5mm.



Hex Nuts

Similar to Wing Nuts, Hex Nuts can be used as anchor nuts in conjunction with a Waler Plate or a Flat Bearing Plate.



Article No.	Bar Ø [mm]	Length [mm]	Hex [mm]	Weldable	Weight [kg/pc.]
Hex Nut – designed to take the full bar load 1)					
15 F 2002/50	15	50	30	Yes	0.22
15 F 2002/70	15	70	30	Yes	0.30
15 VA 2002/50 ²⁾	15	50	30		0.22
15 F 2002/50/G ³⁾	15	50	30		0.19
20 F 2002/70	20	70	36	Yes	0.40
26 E 2002/60 ¹⁾	26.5	60	46	Yes	0.60
26 E 2002/80	26.5	80	46	Yes	0.80
Lock Nut – designed for securing, not for taking loads					
15 F 2040/30	15	30	30	Yes	0.15
20 F 2040/30	20	30	36	Yes	0.16
26 E 2040/30	26.5	30	46	Yes	0.30



- 1) Working load of 26 E 2002/60: 200kN
- 2) Stainless steel, grade VA
- 3) Cast, galvanized

All Hex Nuts are also available galvanized > Article No. .../V
(example: 15 F 2002/50/V)

