

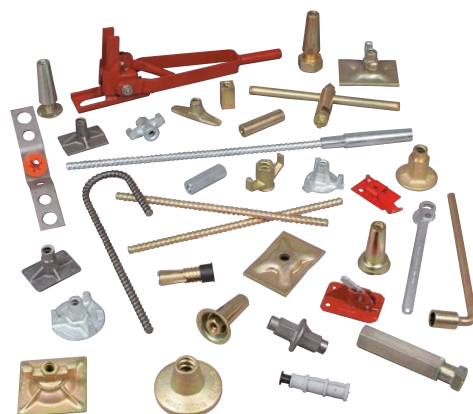
Dywidag - Waler Plate

DYWIDAG - Form Tie System

is based on the original DYWIDAG Threadbar with hot-rolled, continuous thread on both sides. Together with matching accessories, it is used by formwork manufacturers around the world and has proven itself countless times on major projects

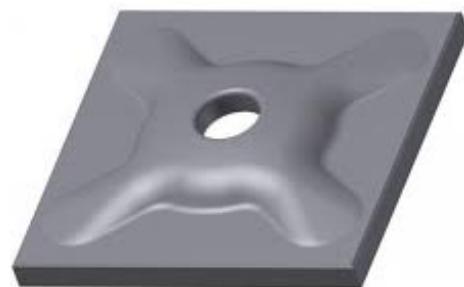
A decisive advantage of the DYWIDAG Threadbar is its coarse thread that does not run around the complete circumference of the bar. Consequently, the bar is not only insensitive against damages and dirt, but also self-cleaning. Furthermore, it can be cut at any point and used continuously with couplers or nuts.

We offer a large range of accessories in diameters 12.5mm, 15mm, 20mm & 26.5mm.



Waler Plate

Pressed Waler Plates are used for timber or steel walings in conjunction with a winged nut or a hex nut for load transfer. The embossing of the plate increases its rigidity. Load capacity depends on the contact area, the admissible bearing pressure and the threadbar that is used.



Article No.	Bar Ø [mm]	Plate [mm]	Hole Ø [mm]	Weight [kg/pc.]
15 F 2062	15	140 x 100 x 10	20	1.15
15 F 2066	15	120 x 120 x 10	20	1.10
15 F 2097	15	200 x 150 x 10	20	2.30

Galvanized, steel grade S235 or similar,

15 F 2062: For use with steel waling

15 F 2066: Working load of 20kN if supported on timber

15 F 2097: Working load of 50kN if supported on timber

