

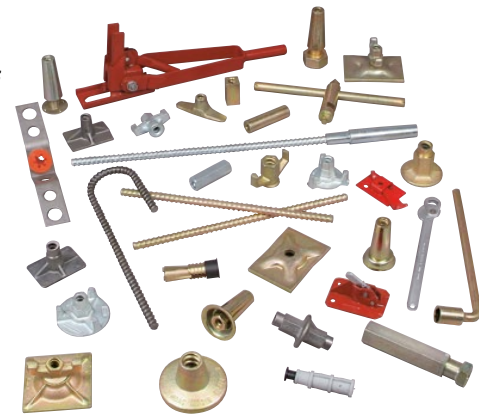
Dywidag - Wing Nut

DYWIDAG - Form Tie System

is based on the original DYWIDAG Threadbar with hot-rolled, continuous thread on both sides. Together with matching accessories, it is used by formwork manufacturers around the world and has proven itself countless times on major projects

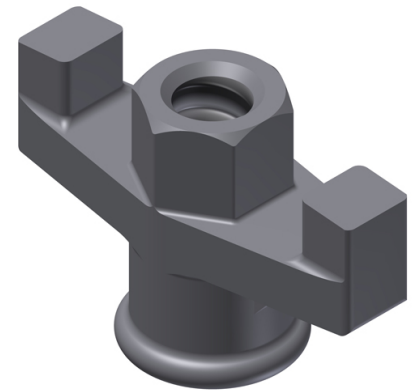
A decisive advantage of the DYWIDAG Threadbar is its coarse thread that does not run around the complete circumference of the bar. Consequently, the bar is not only insensitive against damages and dirt, but also self-cleaning. Furthermore, it can be cut at any point and used continuously with couplers or nuts.

We offer a large range of accessories in diameters 12.5mm, 15mm, 20mm & 26.5mm.



Wing Nut

There are different couplers for the force-fit connection of two threadbars. A stop pin in the middle of the coupler ensures an equal screwing-in length of both bars. Two fixed threadbars can be connected and tensioned using a turnbuckle splice.



Article No.	Bar Ø [mm]	Height [mm]	Hex [mm]	Weight [kg/pc.]
12 F 2071	12	50	24	0.19
15 F 2071	15	55	27	0.35
20 F 2177	20	60	36	0.48
26 E 2177	26.5	65	46	0.87

1) Cast Galvanised

Unless noted, working loads of Nuts and Couplers are as follows: 12 F ...: 30kN; 15 F...: 90kN; 20 F...: 160kN; 26 E...: 250kN

