

Holding Down Bolts / Washers

Description

A non-preloaded bolting assembly for providing connections between structural steel stanchion bases and concrete foundations. These bolts are come complete with nut and are manufactured in accordance with BS 7419-2012 and are provided CE marked according to the requirements of BS EN 1504-1. They are provided in either grade 4.6 or 8.8 steel grades.

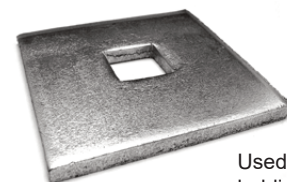
Product Code	Dia. (mm)	Length (mm)	Thread Length (mm)	Grade	Pallet Size
HDB16300	16	300	min.116 / max.122	4.6 or 8.8	1600
HDB16375	16	375	min.116 / max.122	4.6 or 8.8	1400
HDB16450	16	450	min.116 / max.122	4.6 or 8.8	1200
HDB16525	16	525	min.116 / max.122	4.6 or 8.8	1200
HDB16600	16	600	min.116 / max.122	4.6 or 8.8	1200
HDB20300	20	300	min.120 / max.128	4.6 or 8.8	1200
HDB20375	20	375	min.120 / max.128	4.6 or 8.8	1000
HDB20450	20	450	min.120 / max.128	4.6 or 8.8	800
HDB20525	20	525	min.120 / max.128	4.6 or 8.8	700
HDB20600	20	600	min.120 / max.128	4.6 or 8.8	700
HDB24375	24	375	min.124 / max.133	4.6 or 8.8	400
HDB24450	24	450	min.124 / max.133	4.6 or 8.8	400
HDB24525	24	525	min.124 / max.133	4.6 or 8.8	400
HDB24600	24	600	min.124 / max.133	4.6 or 8.8	400
HDB30450	30	450	min.130 / max.141	4.6 or 8.8	300
HDB30525	30	525	min.130 / max.141	4.6 or 8.8	300
HDB30600	30	600	min.130 / max.141	4.6 or 8.8	200

(Add 8.8 to end of the product code for grade 8.8)



Product Code	To Suit Bolt (M)	Square (mm)	Thickness (mm)	Pallet Size
HDBW16	16	100	10	1200
HDBW20	20	100	10	1200
HDBW24	24	100	10	1200
HDBW30	30	100	10	1200

Other sizes available on request.



Used in conjunction with holding down bolts.

Note: In the absence of a specific harmonised European standard (hEN) or European Technical Approval (ETA), a CE Mark is not required.

Unit 51, Portmanmoor Road Ind Est,
Ocean Park, Cardiff, CF24 5HB