

Last Issue Date: 30.01.12



## SOLCOURSE Ecomembrane



- BBA Agreement Certified
- CE Marked
- 100% Recycled from 'Post-use' waste ensuring less waste going to landfill sites
- Same performance characteristics as traditional DPM
- High Strength & Puncture Resistant
- Suitable for use with the Solco DPC System Accessories

### Description

Solcourse Ecomembrane is manufactured from 100% post-use waste, recycled polyethylene. This helps ensure that less waste is sent to landfill making this an environmentally friendly product.

The quality of the product is not compromised in any way so that the Ecomembrane can be used in exactly the same way as the standard DPM.

### Applications

Solcourse Ecomembrane has been designed for use in solid concrete ground floors to protect building against water ingress, providing an effective barrier against liquid or vapour for the lifetime of the concrete slab in which it is installed. It is not suitable for use in situations where it may be subject to hydrostatic pressure, in such cases Solsheet tanking membranes should be used.

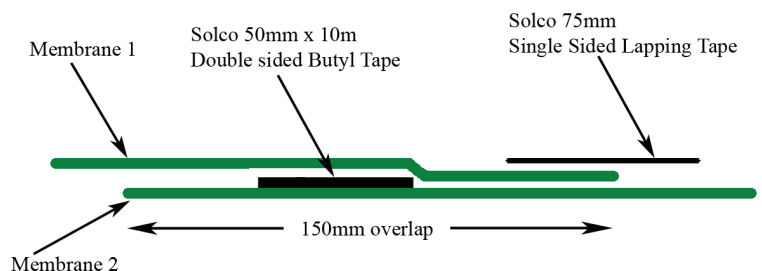
Solcourse Ecomembrane is not suitable for use as a gas barrier, the Solshield range of gas protection membranes should be used if there is ground contaminated with gases on sites such as brownfield or naturally occurring gases such as radon.

### Installation

When installing a DPM, even though it has a high puncture resistance care should always be taken to avoid accidental damage and a suitable blinding should be used. Where the area is subject to high foot traffic temporary protection boards should be used to maintain the integrity of the membrane and its jointing.

### Jointing & Surface Fixing

When jointing Solcourse Ecomembrane a minimum of 150mm is to be joined / adhered using the Solco Double Sided Butyl Tape between membranes and the 75mm single sided lapping tape to seal the outer edge and provide a continuous bond.



In order to provide effective protection the bond between the dpm and the dpc should be continuous.

To ensure a satisfactory bonding is made, the Solco range of system accessories should always be used.

## Dimension Properties

Thickness (mu / guage)	250	300	500
Roll Width	4m	4m	4m
Roll Length	25m	25m	12.5m
Colour	Black	Black	Black
Roll Weight	23kg	27kg	23kg

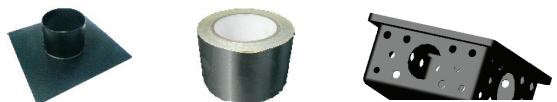
## Technical Data

Resistance to Tearing (Nail) (Max Load N) <small>BS 747(MOAT 27:5.4.1) / BS 2782-3.360B</small>	118	>118	>118
Tensile Strength (N/mm <sup>2</sup> ) <small>BS 2782-3.320A</small>	23.6	24.3	24.3
Elongation <small>BS 2782-3.320A</small>	684%	691%	691%
Visible Defects	None	None	None
Mass Per unit Area <small>BS EN 12311-1</small>	225g/m <sup>2</sup>	265g/m <sup>2</sup>	460g/m <sup>2</sup>
Watertightness <small>BS EN 1928 - Method A</small>	Pass	Pass	Pass
Moisture Vapour Transmission Rate (g/m <sup>2</sup> /day) <small>BS3177 (25°C / 75% RH)</small>	0.68	0.29	0.15
Moisture Vapour Resistance (MNsg <sup>-1</sup> ) <small>BS3177 (25°C / 75% RH)</small>	302	708	1368
Impact Resistance <small>BS EN 12691</small>	Pass	Pass	Pass
Durability against ageing <small>BS EN 1926</small>	Pass	Pass	Pass
Durability against ageing <small>BS EN 1874</small>	Pass	Pass	Pass

### Storage & Handling on site

SOLCOURSE Ecomembrane is classified as non-hazardous (code of practice CP102 1973). The product is chemically inert and any acids or alkalis present in the subsoil will not affect the membrane. It is not recommended for use when exposed to sunlight and general outdoor weather conditions for long periods of time. Weathering will not occur when installed. Rolls should be stored undercover. Quality control during the laying of the membrane is extremely important the membrane should be protected

### DPC System Accessories



## Technical Data

SOLCO Single Sided Lapping Tape	Single sided tape for securing laps & joints	75mm	Securing Laps & Joints	Rolls
SOLCO Double sided Butyl Jointing Tape	Butyl Adhesive Tape	50mm x 10m	Butyl based double sided tape for joints and laps	Rolls
SOLCO Top Hat Units	Polymeric	Various	For sealing around penetrations through gas membrane	Each
SOLCOURSE GR DPC	A flexible polyethylene DPC with an aluminium foil	300mm - 1000mm	To prevent the transmission of Radon, CO <sub>2</sub> & Methane Gas	20m Rolls
SOLCO Gas Sump Units	Part of the Radon Protection System	430 x 430 x 220mm	Radon Sumps are used in full protection areas, for sub floor depressurisation.	Each
SOLCO XL Jointing Tape	Reinforcing Tape	100, 150 & 300mm	Over-band tape self-adhesive	20m Rolls
SOLCO Primer	Primer for SA Membrane	5L & 25L	Surface Primer	Drums
SOLCO Protection Boards	Bitumen / Polymeric	3mm thick	For heavy duty use	2m x 1m
SOLCO Corrugated Board	Plastic Corrugated	2mm thick	For light duty use	2m x 1m