

Soldrain Double

Description:

Soldrain Double is a sheet drainage system consisting of an 8mm studded HDPE membrane and a nonwoven geotextile - manufactured from UV stabilised, high tenacity, virgin polypropylene fibres that have been mechanically entangled. This provides high strength, high extensibility, high loft and excellent abrasion characteristics.

Soldrain Double can be used as a protective barrier between the structure and the surrounding fill and act as a protective layer to the primary waterproofing membranes.

Soldrain Double isolates and protects the external structure from surround soil and helps relieve hydrostatic pressure from the face of the structure.

Soldrain Double is a UV stable and reliable root and fungi-proof drainage system, which when fully protected from UV exposure, has a design life in excess of 120 years.

Soldrain Double offers levels of protection required for below ground structures, described in BS 8102: 2009, Grades 2, 3 & 4.

The product is CE marked according to EN 13252.



- **CE Marked.**
- **Provides protection to the primary waterproofing membrane.**
- **Filter fabric protects the structure from the surrounding earth.**
- **High drainage capacity.**
- **Suitable for use with all construction types.**
- **Combined drainage and protection board.**
- **Easy handling and rapid installation**

Typical Uses:

- Basements and foundations.
- Tunnels and underpasses.
- Underground car parks.
- Landscaping / Reservoirs.
- Plaza decks and terraces.
- Retaining walls.
- Landfill sites.
- Roof gardens.
- Planter boxes.
- Floor slabs.

Features & Benefits:

- Combined drainage and protection board to the waterproofing membrane.
- Suitable for use with all construction types.
- Drains off water before reaching the waterproof coating.
- High water flow/drainage capacity.
- Filtration layers prevent silting-up.
- Rugged, durable construction with thermal insulation benefits.
- High compressive strength.
- Lightweight and easy to handle.
- Allows back-filling with excavated earth.

Further Uses:

Soldrain Double can be used as an alternative to Solco Protection Board.

Soldrain Double will segregate the structure from the surrounding earth and relieve hydrostatic pressure, enhancing the performance of the main membrane. Soldrain Double will not only provide excellent protection to the main membrane against backfilling and root penetration, but can also increase the thermal insulation of the structure.

Storage:

- No specific storage is needed.
- Store rolls upright and under cover.
- Keep protected from extreme temperatures.

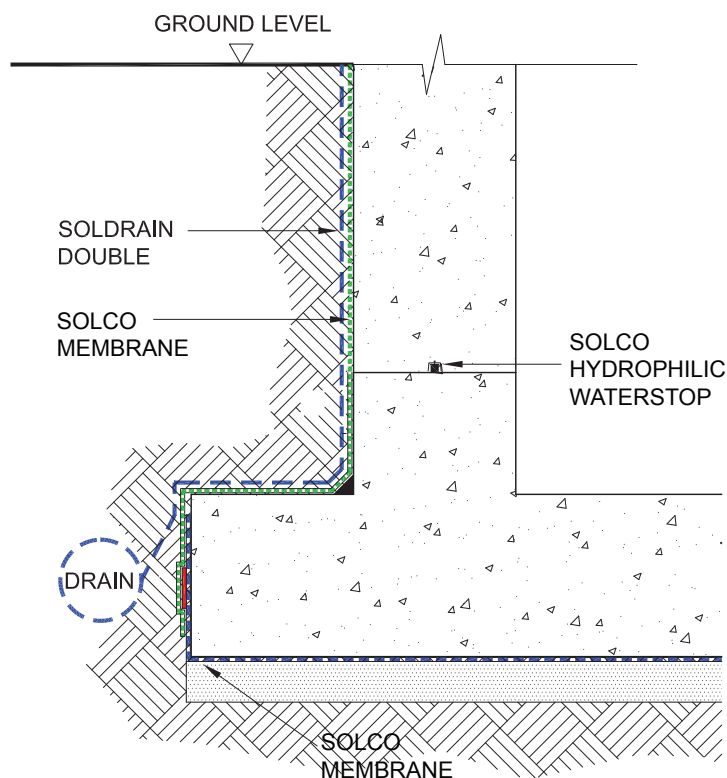
Ancillary Products

Solco Double Sided Butyl Tape	100mm x 10m
Solco XL Reinforcing Tape	150mm x 20m
Solsheet Self-Adhesive Membrane	1m x 20m
Solco Membrane Fixing Plugs	Bags of 100
Solco Sealing Washers	Bags of 100

Solco, Unit 51, Portmanmoor Road Industrial Estate, Ocean Park, Cardiff, CF24 5HB

Application:

- Soldrain Double should be installed to the outer face of the structure against the waterproofing membrane, with the geotextile filter fabric facing outwards.
- Soldrain Double has a 50mm selvedge which allows sheets to be overlapped and securely joined using Solco Double Sided butyl tape.
- Adjacent sheets should be overlapped by approximately 150mm. Peel back the geotextile layer and overlap the dimple sections, ensuring that they are firmly embedded onto each other and that the butyl tape below has securely adhered. The lower sheet should always be installed under the upper sheet.
- Fold the geotextile overlap back over the geotextile below it, and secure using Solco XL Reinforcing Tape.
- Where there is a self-adhesive waterproofing membrane attached to the structure, secure the sheets of Soldrain Double to it, using Solco Double Sided butyl tape in horizontal bands.
- The top edge of the Soldrain Double can be mechanically fixed to the structure (brickwork, concrete etc.) using Solco Membrane fixing plugs.



Soldrain Double - Typical Detail

Technical Data:

Property	Value
Colour	Black
Sheet Thickness	0.97mm
Stud Height	8mm
Weight [EN 149-2]	610 g/m ²
Roll Weight	24.4 kg
Watertightness (60kPa for 24hrs) [EN 1928]	50mm
Resistance to Static Loading [BS 12730]	>20 kg
Tensile Strength (MD / CMD) [BS 12311-2]	416 N / 488 N
Compressive Strength	180 kN
Life Expectancy	Lifetime of Structure
Working Temperature	-50C to +80C
Chemical Resistance	Excellent to all common ground water chemicals
Physiological Properties	Non Polluting for drinking water

Roll Size
20m x 2m

Solco, Unit 51, Portmanmoor Road Industrial Estate, Ocean Park, Cardiff, CF24 5HB