

Solfix 100

Description:

Solfix 100 is a two component chemical anchoring injection system in 1:1 ratio. Solfix 100 uses a formulation derived from pure epoxy with very high bond strength and is developed principally to anchor threaded rods and rebar into concrete. Used for high performance structural applications where loading is critical. For use in wet or flooded environments and fixing holes, or underwater.

Characteristics:

- Suitable for high loads featuring large diameters and deep embedments.
- Longer working times make it suitable for large holes, and high temperatures.
- High durability, resistance to chemicals.
- No Shrinkage - Good for large diameter fixings.
- Used for diamond drilled holes.
- Solvent free resin.
- Fixings in concrete, wood, or other high strength materials.

Storage & Shelf Life:

- The product should be stored between +5°C & +25°C.
- Avoid Direct Sunlight.
- The Shelf life of the product is 24 months from the manufacture date.

Approvals / Certifications / Testing:

- ETA TR023+TR029 Post Installed Rebar Installations, Option 1 Concrete.
- EAD 330499-00-0601 & EAD 330087-00-0801.
- CE Certified 1404-CPR-3135 / 3269 - ZAG, Slovenia.
- Fire Test Report in ETA.
- WRAS Approved for use with Potable drinking water* approval no. 1811527.
- LEED tested 2009 EQ c4.1 SCAQMD rule 1168 (2005.).
- VOC A+ Rating (Volatile Organic Content).

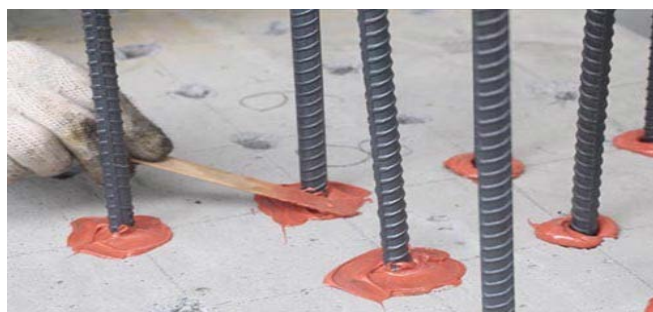
Technical Data:

Property	Value
Mixed Colour	Red or Grey
Density	1.43 kg/m ²
Compressive Strength [EN ISO 604]	88 N/mm ²



Pack Size

400ml Cartridges



Solco, Unit 51, Portmanmoor Road Industrial Estate, Ocean Park, Cardiff, CF24 5HB

Typical Tensile Performance - Standard Embedment Depth (Concrete, C20/25, 5.8 Grade Studding):

Size	Recommended Load (kN)		Spacing (S _{cr,N}) (mm)	Drill Hole ø (mm)	Fixing Hole ø (mm)	Setting Depth (mm)
	Tension (N _{rec})	Shear (V _{rec})				
M8	9.07	5.14	160	10	9	80
M10	14.36	8.57	200	12	12	90
M12	20.86	12.00	240	14	14	110
M16	38.86	22.29	320	18	18	125
M20	43.07	34.86	400	22	22	170
M24	59.24	50.29	480	28	26	210
M30	98.74	81.43	600	35	32	280

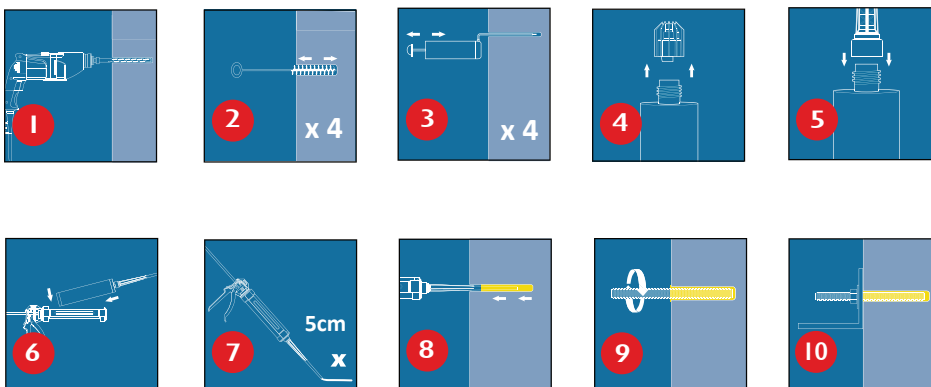
Working & Hardening Times:

Base Material Temperature	5°C	15°C	25°C	35°C	40°C
Gel Working Time	100'	60'	40'	25'	20'
Curing Time (Dry Concrete)	40 hrs	24 hrs	11 hrs	9 hrs	8 hrs
Curing Time (Wet Concrete)	80 hrs	48 hrs	22 hrs	18 hrs	16 hrs

CE 1404	CE 1404
2019	2019
ETA CE	ETA CE
ETA-19/0705 EAD 330499-00-0601 M8-M24 8mm - 24mm Option 1+7 1404-CPR-3267	ETA-18/1157 EAD 330087-00-0601 8mm - 40mm + Fire Post Installed Rebar 1404-CPR-3135



Installation (Solid Substrates):



Note: Not for use in hollow wall applications

The information and data given is based on our own experience, research and testing and is believed to be reliable and accurate. However, as Solco Products cannot know the varied uses to which its products may be applied, or the methods of application used, no warranty as to the fitness or suitability of its products is given or implied. It is the users responsibility to determine suitability of use. For further information please contact our Technical department.