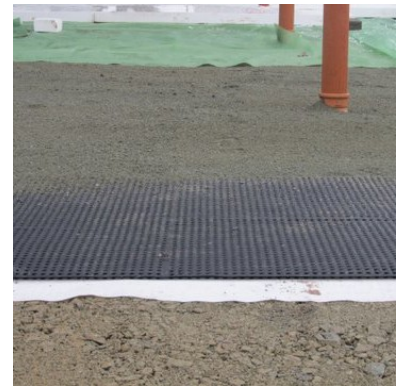


Solco Gas Vent Connectors

Solco Slotted Vent Connectors are primarily used to either provide a path for the gases to the outside of the building perimeter or to provide a path through the ground beams within the perimeter of the building.



Solco SBP-010 Slotted 'T' Connector

- 110mm Slotted Vent Mat Connector
- Used for gas venting (strip application only)
- Yellow, red or black end caps can be supplied



Solco SBP-011 Vent Mat Connector

110mm Vent Mat Connector.
Used for gas venting– blanket or strip application.



Solco SBP-009 Rectangular Vent Mat Connector

- Rectangular Sleeved Vent Mat Connector
- Used for gas venting - blanket or strip application
- For use with SBP-015/17



Solco End Caps

Solco end Caps are used with the Slotted Vent Mat Connector



Solco, Unit 51, Portmanmoor Road Industrial Estate, Ocean Park, Cardiff, CF24 5HB