

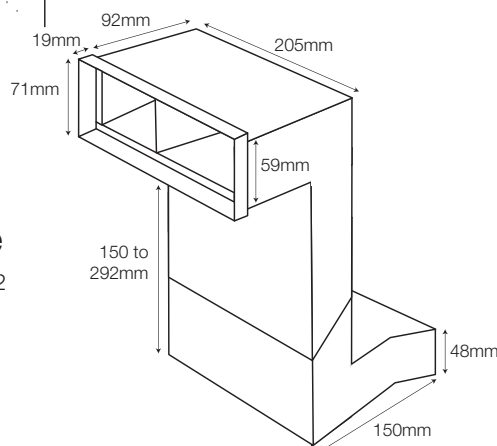
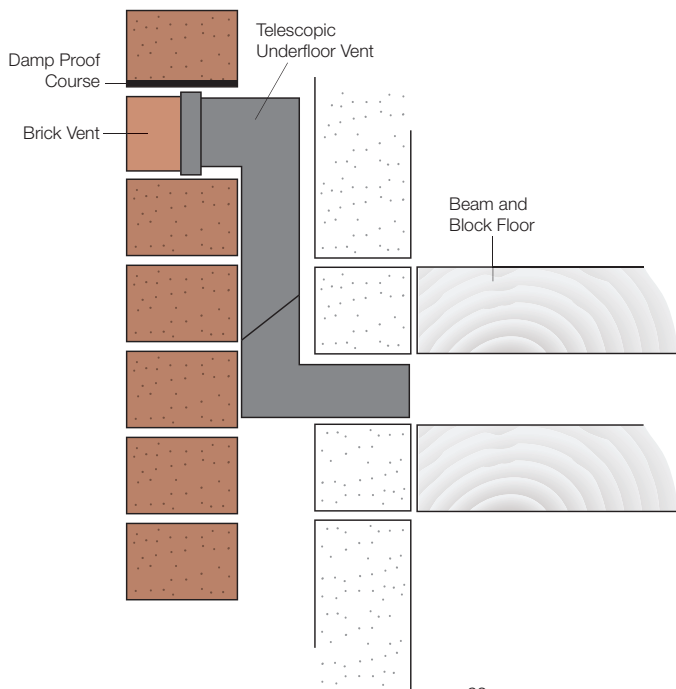
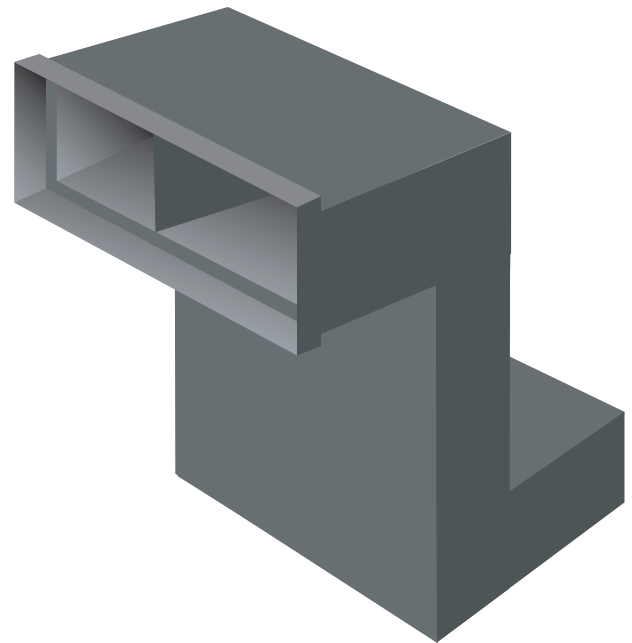
Telescopic Underfloor Vent

Description

Telescopic Underfloor Vents facilitate a flow of air from beneath suspended timber block and beam floors through the cavity. The units are adjustable vertically to extend through a number of brick courses. The front of the vent is designed to fit a Brick Vent or, where horizontal extension is required, and Cavity Sleeve can be used. The rear of the vent features a grill panel designed to prevent the entry of insects, rodents or debris so as to avoid airflow blockages.

Installation

NHBC requirements are for spacing of 2m maximum centres with positioning no more than 450mm from the ends of the wall and down two adjoining building sides to create a cross-airflow. The Telescopic Vent should be installed during the normal course of brick laying above the external ground level. Vertical Extension sleeve and Cavity Sleeve are available for use where an extension to accommodate a longer than average course step or cavity width is required.



Technical

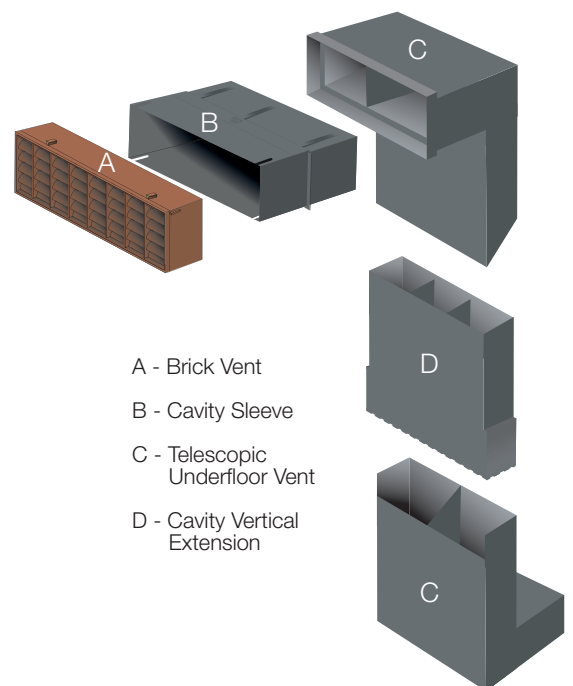
Colour: Grey

Box Qty: 20

Material: Polypropylene

Free Airflow: 6,600mm²

Product Code	Description	Box Qty
SOLCO/TELE/UVENT	Telescopic Underfloor Vent	20



- A - Brick Vent
- B - Cavity Sleeve
- C - Telescopic Underfloor Vent
- D - Cavity Vertical Extension

This product should be used in conjunction with other products from the brick ventilation range to provide a complete through wall ventilation system.