

RECOSTAL

BY DYWIDAG 



RECOSTAL[®] 2000 GT/GTZ

Self-supporting shuttering unit

In Partnership & Distributed By



www.bluebaybp.co.uk

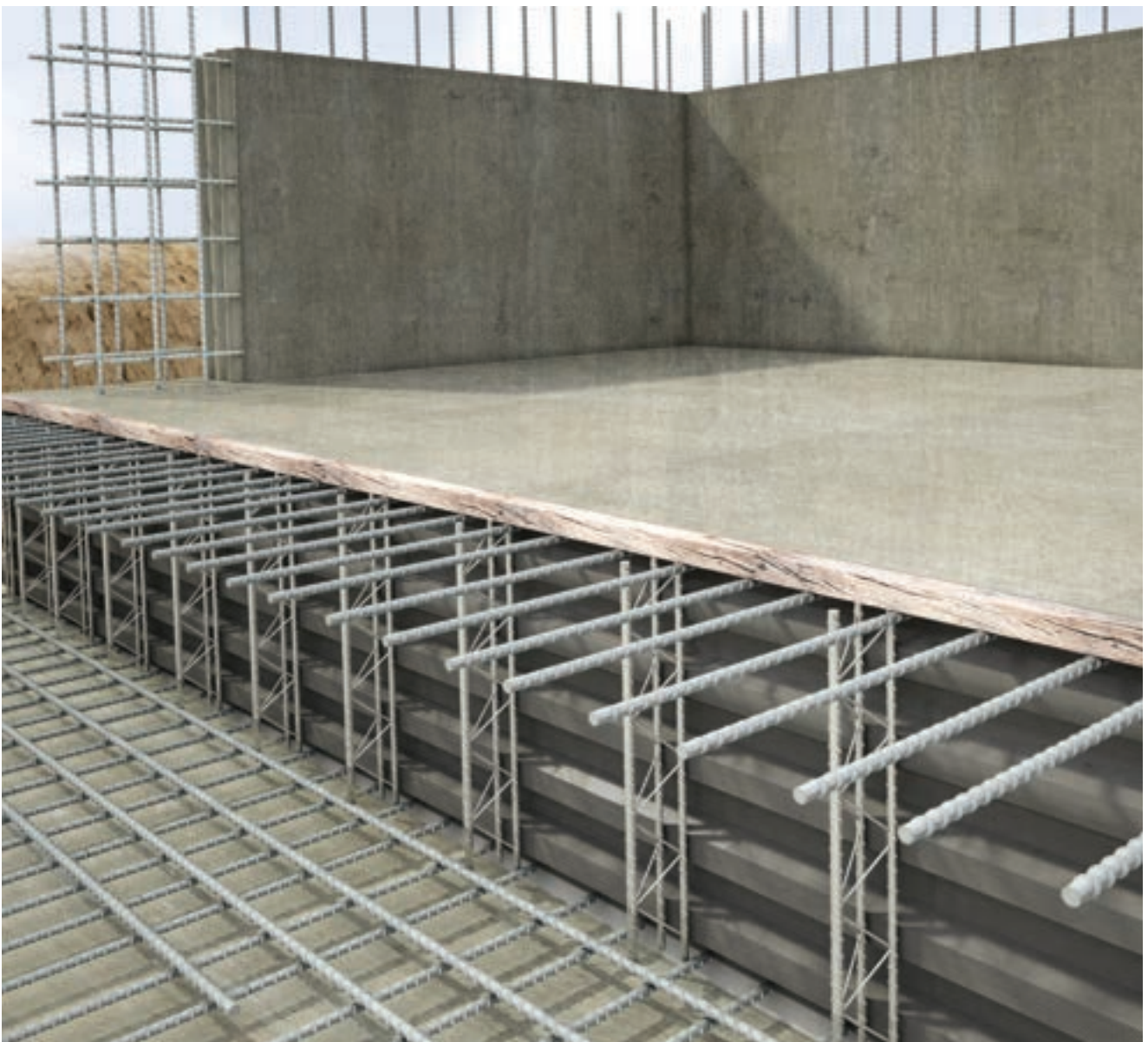
RECASTAL® 2000 GT/GTZ

Self-supporting shuttering units with two-directional axial load bearing capacity for heights exceeding 40 cm

RECASTAL® 2000 GT shuttering unit consists of finely-meshed, trapezoidally profiled expanded metal with welded lattice supports. These units are normally used to install formwork for construction joints in base slabs. The bearing capacity is clearly separated into a vertical and a horizontal direction. The load per surface resulting from the pressure of fresh concrete is carried by the trapezoidal profile and transferred to the vertical lattice supports. These supports bear the load and transfer it to the top and bottom end points.

The Benefits

- Fully self-supporting in all heights and dimensions
- Key profile according to EC 2 for highest load-bearing capacity
- Extensive combinable with CONTEC® sealing systems
- Cost and time efficient due to prefabricated elements



Self-supporting shuttering units

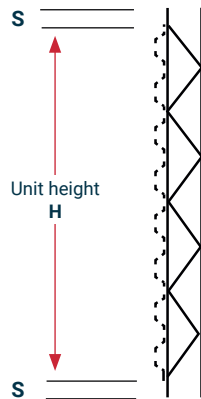
RECOSTAL® 2000 GT

Joint category "key-profiled"

Self-supporting in all heights from 40 to 150 cm.



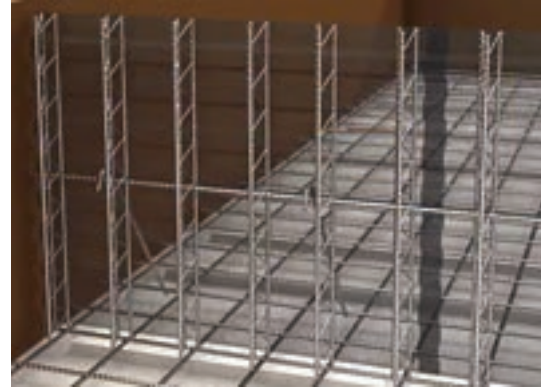
Space (S) =
Projection of lattice support
(standard S = 4 cm)



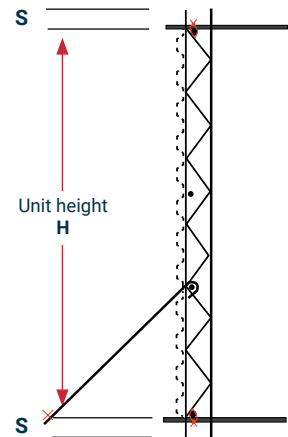
RECOSTAL® 2000 GTZ

Joint category "key-profiled"

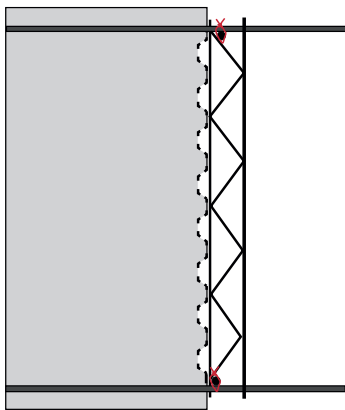
For heights more than 150 cm we can offer RECOSTAL® 2000 GTZ version with additional support with reinforcement bars.



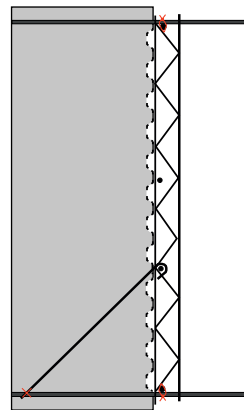
Space (S) =
Projection of lattice support
(standard S = 4 cm)



In addition, the RECOSTAL® 2000 GT/GTZ units are available with pre-assembled swelling strips or injection hoses.



In order to withstand concrete pressure fix lattice supports to the top and bottom reinforcement



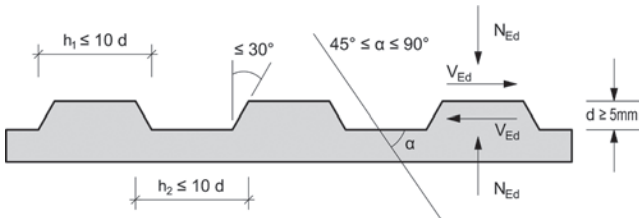
For formwork heights $H > 150$ cm with additional on-site lattice support. Lattice support fixed to the bottom reinforcement.

Technical data

The trapezoidal profile of RECOSTAL® 2000GT/GTZ units meets the requirements of Eurocode 2 for the highest classification "key-profiled"

Joints according to Eurocode 2

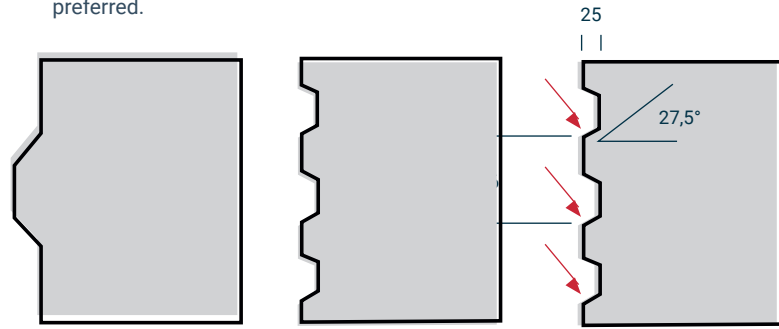
The reinforcement layout drawings are to clearly define the type of joint.



Geometry of a key-profiled joint according to Eurocode 2

Evaluation of a single rib profile compared to an even trapezoidal profile

According to concrete calendar 2004 Part 1, Page 188 (essay segmental bridges) single rib profiles can lead to the occurrence to gaping cracks and therefore a trapezoidal profile is to be preferred.

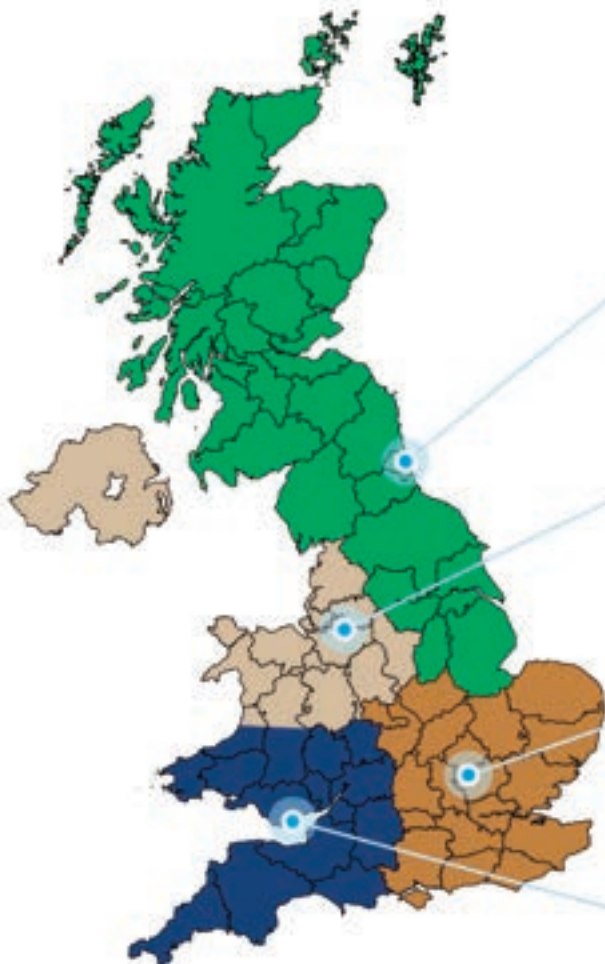


Single rib profile

Key-profiled RECOSTAL®

RECOSTAL® profile

Distribution Network



BLUEBAY NORTH & SCOTLAND

Unit 16 G, Follingsby Park
Gateshead, NE10 8YF
Tel: 0191 416 6572
Fax: 0191 416 8614
email: gateshead@bluebaybp.co.uk

NORTH WEST & E. MIDLANDS

Unit 2A & 2B, New Cut Lane Ind Est,
Warrington, WA1 4AG
Tel: 0192 587 5588
Fax: 0192 581 9559
email: warrington@bluebaybp.co.uk

BLUEBAY LONDON & S.E.

Unit 3, Stadium Ind Est, Craddock Roa
Luton, Bedfordshire LU4 0JF
Tel: 01582 594007
Fax: 01582 594009
email: london@bluebaybp.co.uk

BLUEBAY WALES & WEST

Unit 51, Portmanmoor Rd Ind Est
Ocean Park, Cardiff, CF24 5HB
Tel: 02920 495555
Fax: 02920 491700
email: sales@bluebaybp.co.uk